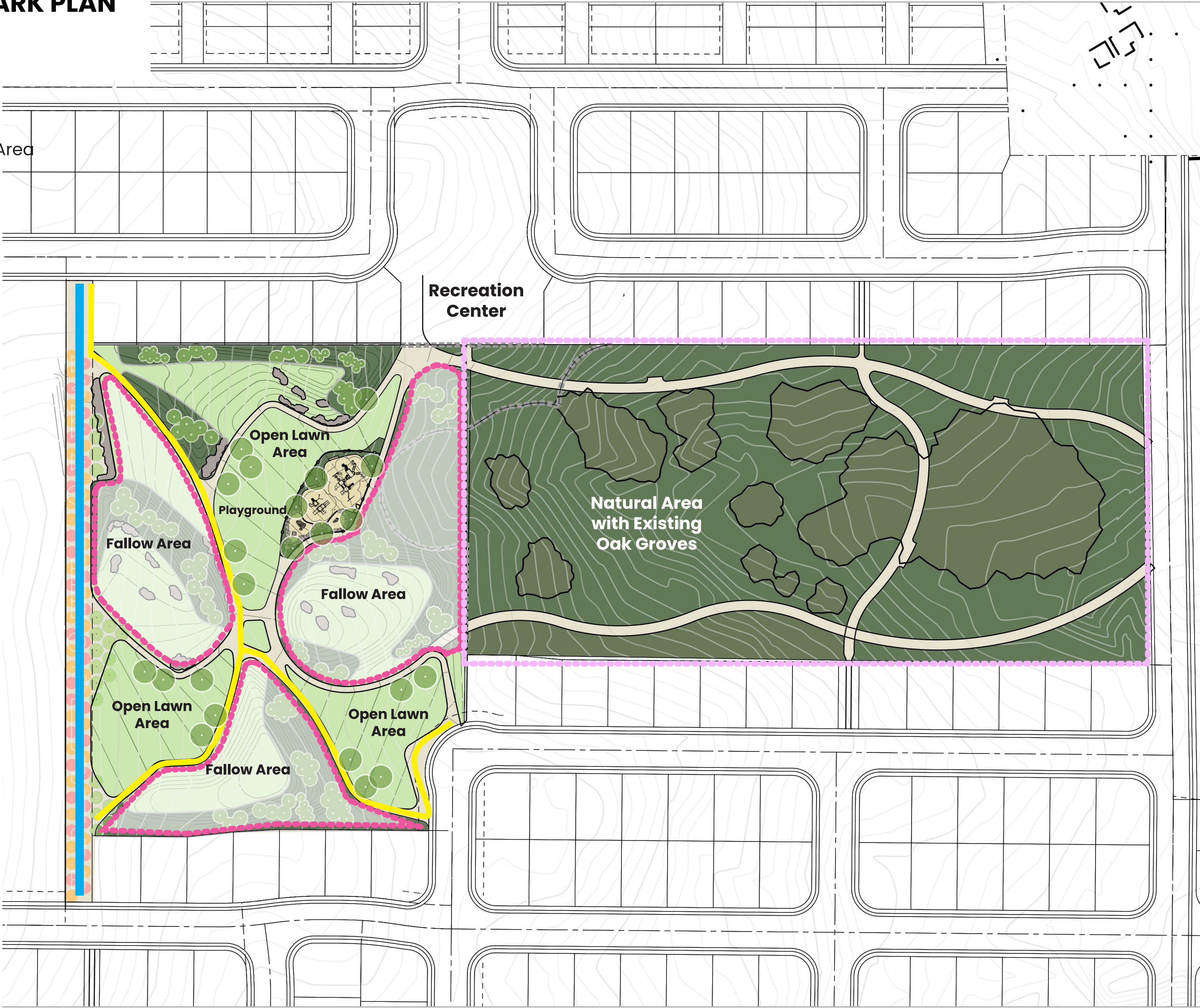


NEIGHBORHOOD "NATURAL" PARK PLAN  
CURRENT BUDGET

LEGEND

- Natural/Native Meadow Planting Area
- Open Turf Area
- Asphalt EVA
- Concrete Trail
- DG or Gravel Trail
- Fallow Area  
Erosion control planting  
and salvaged boulders
- Natural Area w/ Existing  
Oak Groves  
Trails as shown, existing  
vegetation to remain



SCALE: 1"=50'  
0 50' 100'





NEIGHBORHOOD PARK  
CONCEPT IMAGES



OAK / NATURAL AREA PARK PRECEDENT IMAGE



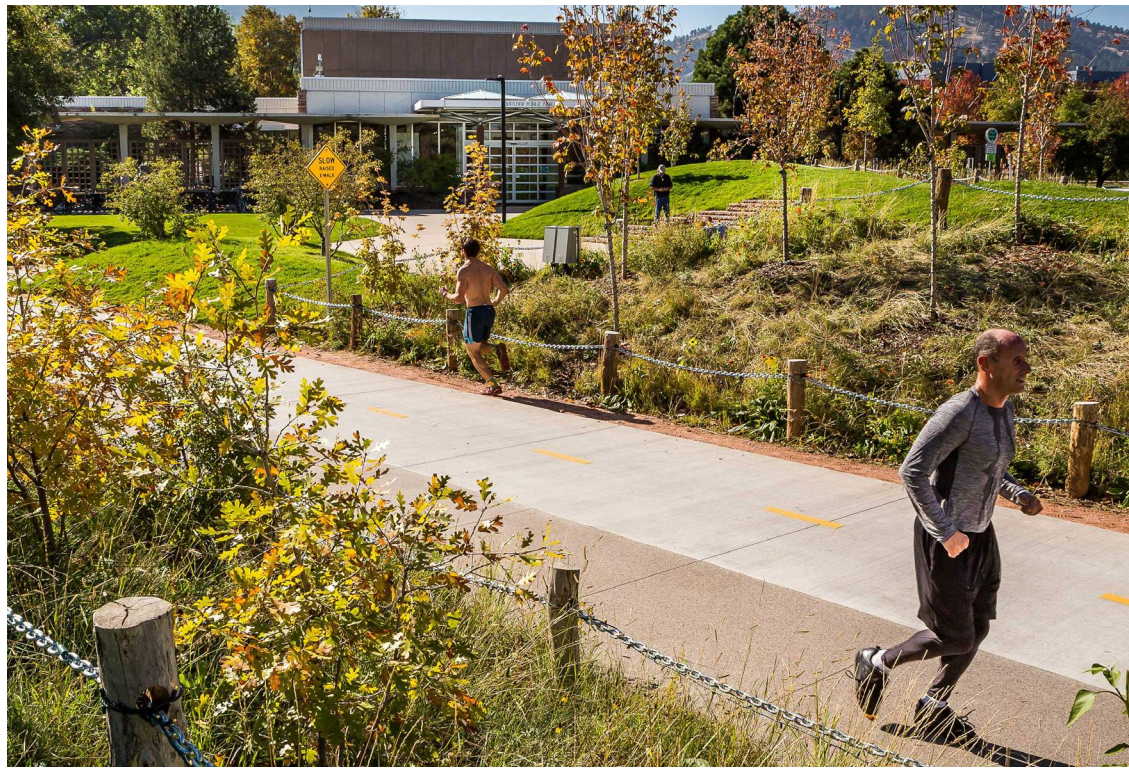
ROCKLIN BOULDER OUTCROPS



OPEN LAWN GLADES



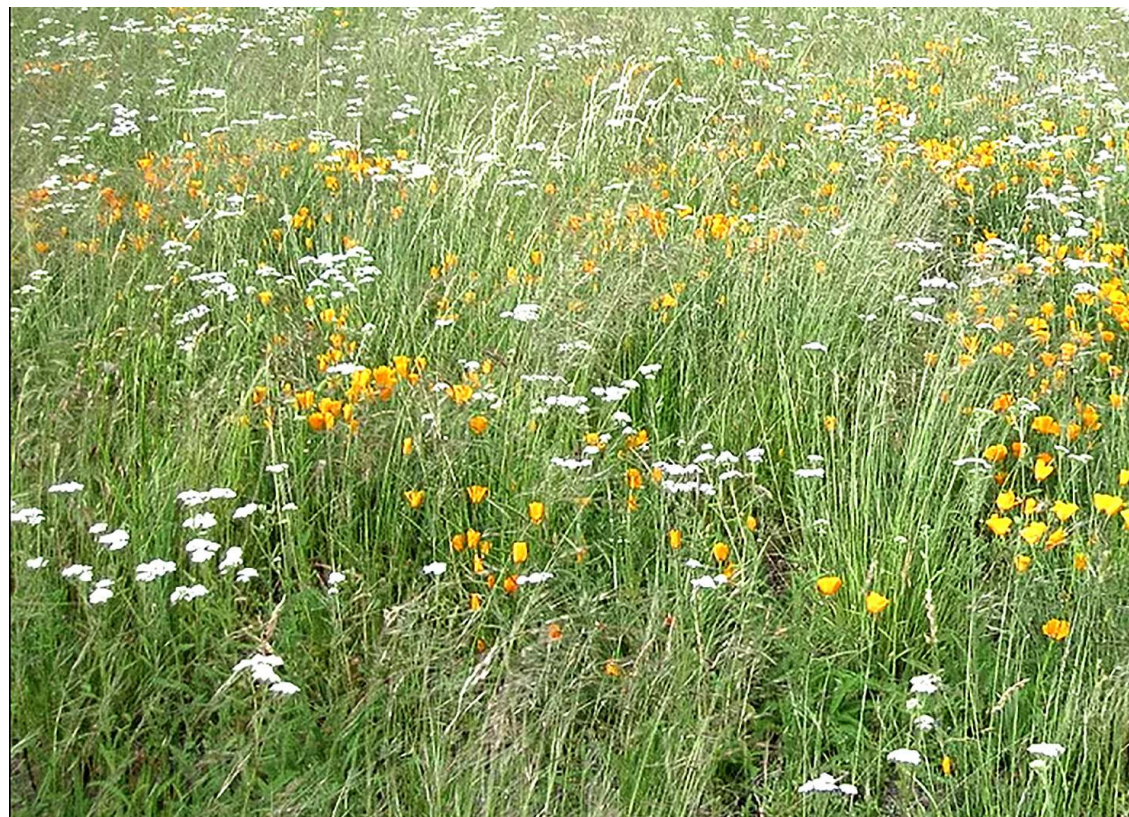
ROCKLIN BOULDER OUTCROPS / PLANTING



WALKING TRAILS



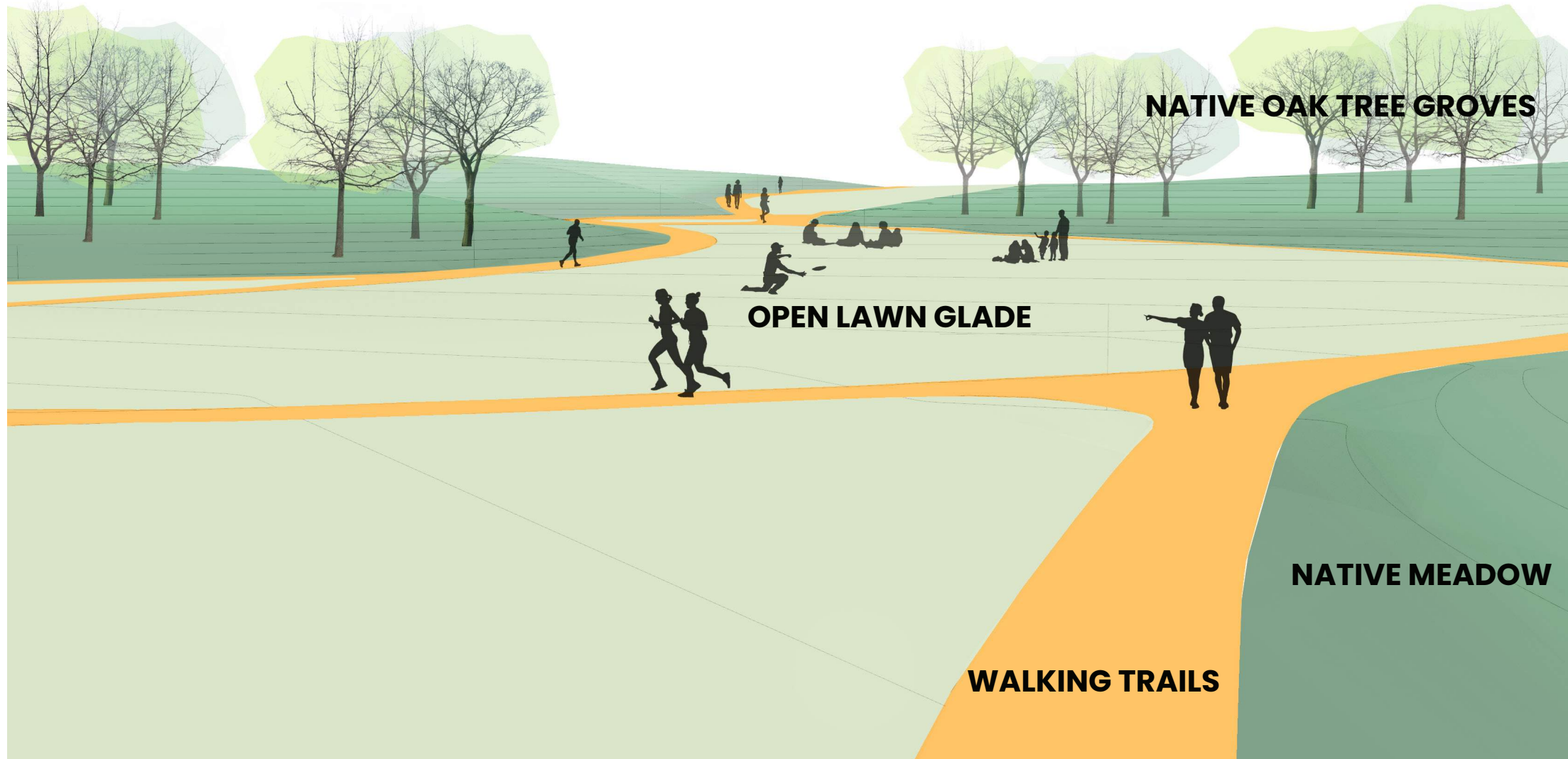
PLAYGROUND



NATIVE MEADOW PLANTING AREA



PARK 3D MODEL DIAGRAM VIEW OF OPEN LAWN GLADE, TRAILS AND TOPOGRAPHY



PARK 3D MODEL DIAGRAM VIEW OF OPEN LAWN GLADE, TRAILS AND TOPOGRAPHY



PARK 3D MODEL DIAGRAM VIEW OF OPEN LAWN GLADE, TRAILS AND TOPOGRAPHY



NEIGHBORHOOD PARK  
PLAYGROUND



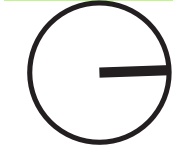
PLAYGROUND ENLARGEMENT PLAN



NEIGHBORHOOD PARK PLAYGROUND CONTEXT VIEW  
VIEW "A" LOOKING FROM THE RECREATION CENTER ENTRANCE LOOKING EAST

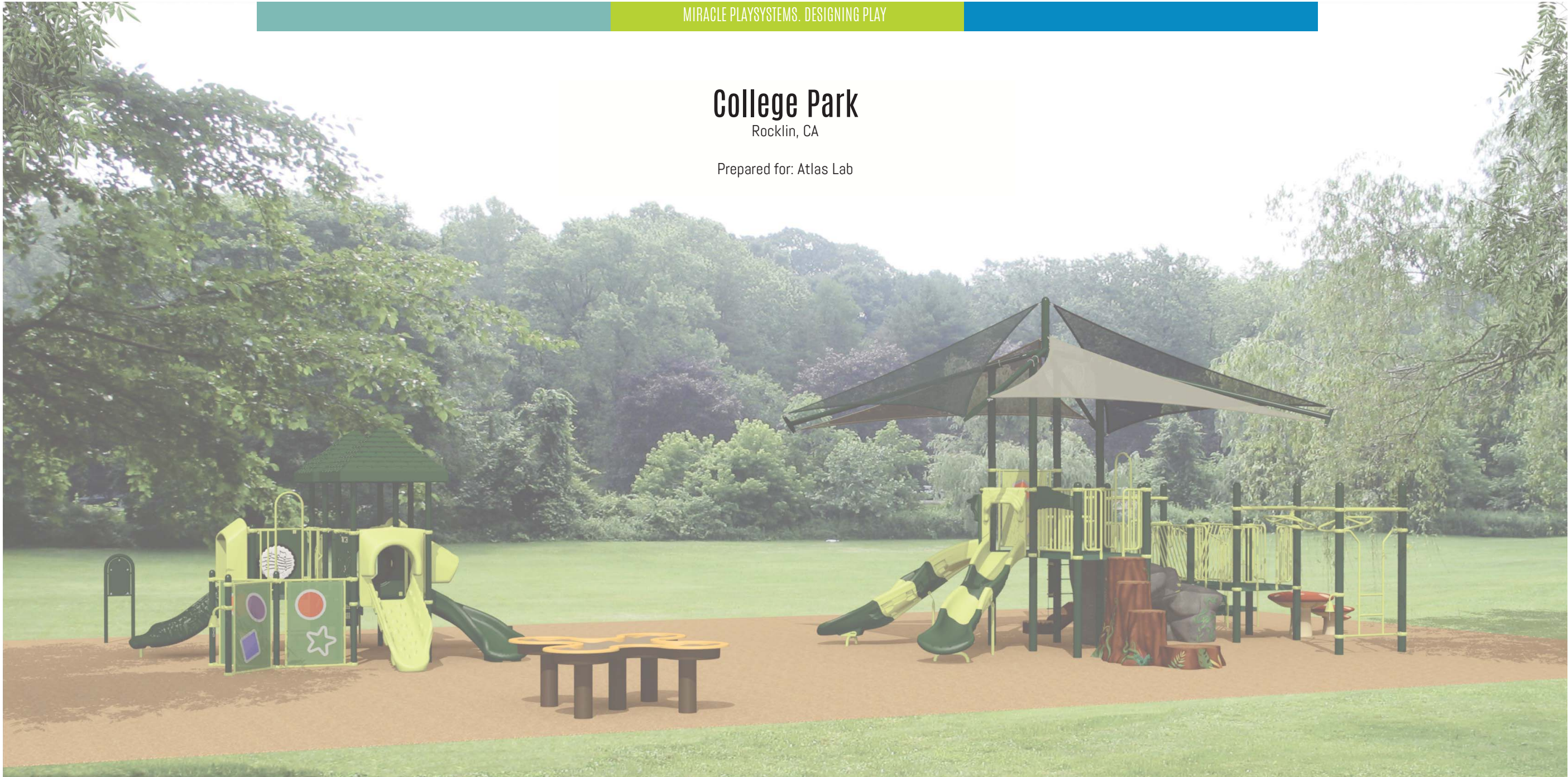


NEIGHBORHOOD PARK PLAYGROUND CONTEXT VIEW  
VIEW "B" LOOKING FROM SAND PLAY AREA LOOKING WEST





NEIGHBORHOOD PARK – PLAYGROUND STRUCTURES



College Park  
Rocklin, CA  
Prepared for: Atlas Lab



Prepared By  
Karl Maniglia  
Sales Account Manager  
Miracle Play Systems Inc.  
karl@miracleplaygroup.com  
(916)317-0545



Creating Fun Play Environments to Enrich Communities

NEIGHBORHOOD PARK PLAYGROUND  
MIRACLE PLAYSYSTEMS CONCEPT DESIGN PACKAGE



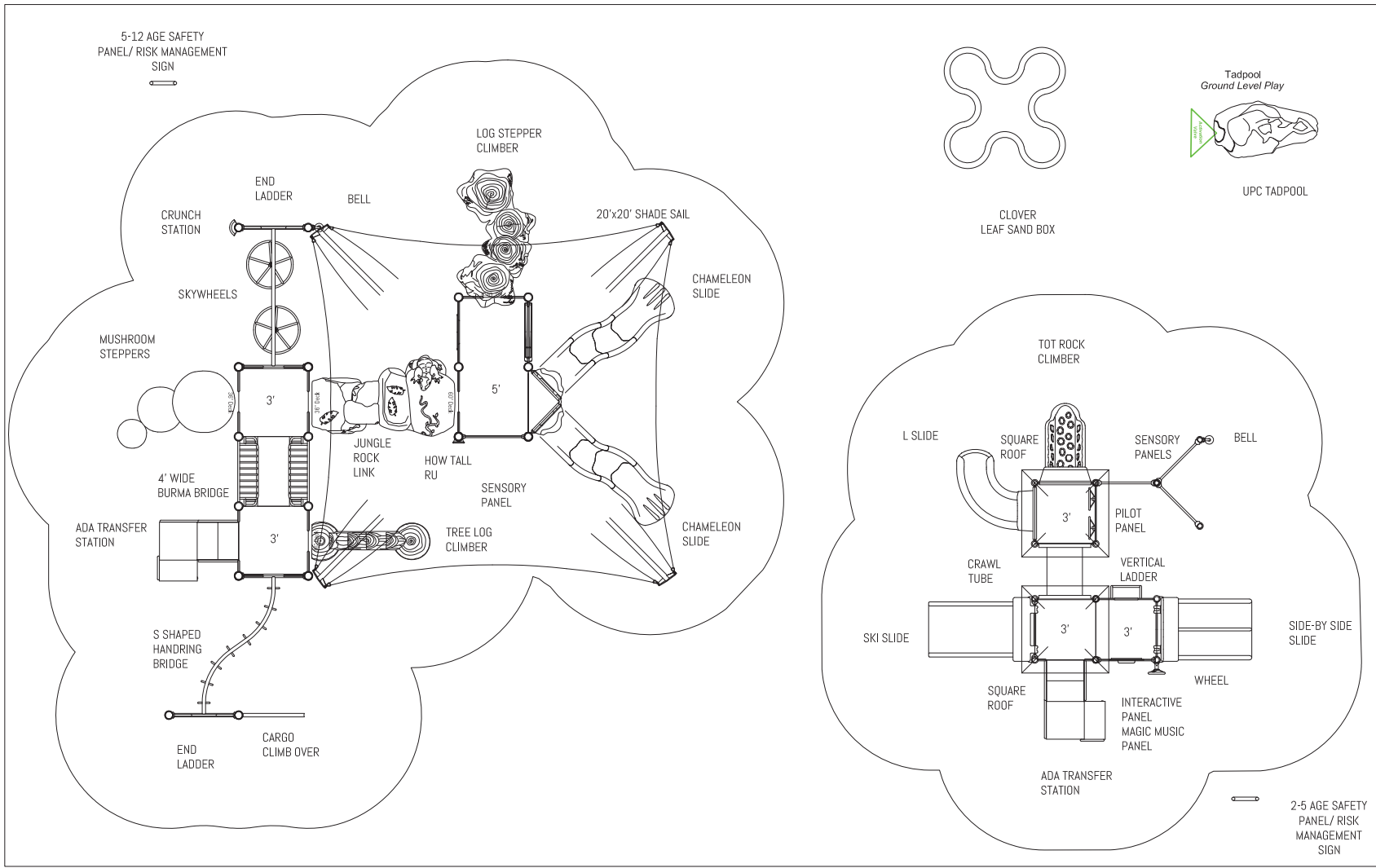
\*Colors shown in rendering is for illustrative purposes only. Actual color and pattern may vary slightly.

04/21/2021  
21\_0566\_College\_001

Creating Fun Play Environments to Enrich Communities

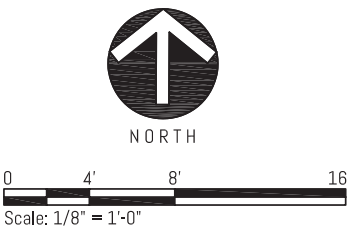


MIRACLE PLAYSYSTEMS. DESIGNING PLAY



PLAY AREA - AGE APPROPRIATE 5-10 YEARS:	CAPACITY: 45-50 CHILDREN
ELEVATED PLAY ACTIVITIES TOTAL:	10
ELEVATED PLAY ACTIVITIES ACCESSIBLE BY TRANSFER:	10
ELEVATED PLAY ACTIVITIES ACCESSIBLE BY RAMPS:	0
GROUND LEVEL ACTIVITY TYPE:	4
GROUND LEVEL ACTIVITY QUANTITY:	4

PLAY AREA - AGE APPROPRIATE 2-5 YEARS:	CAPACITY: 45-50 CHILDREN
ELEVATED PLAY ACTIVITIES TOTAL:	8
ELEVATED PLAY ACTIVITIES ACCESSIBLE BY TRANSFER:	8
ELEVATED PLAY ACTIVITIES ACCESSIBLE BY RAMPS:	0
GROUND LEVEL ACTIVITY TYPE:	3
GROUND LEVEL ACTIVITY QUANTITY:	3



04/21/2021  
21\_0566\_College\_001

Creating Fun Play Environments to Enrich Communities



NEIGHBORHOOD PARK PLAYGROUND  
SAND/WATER PLAY

### Ruby Falls

ADA Accessible Water Feature

Surfacing - shown partially transparent for clarity. Rubber surfacing suggested for ADA Accessibility. 12" of Part designed to be below finish grade. Footing not required.

Plan View - Use Zone  
Scale: 1/8" = 1'-0"

Notes:  
Material = Polyfibreconcrete  
Finish/Texture = light sandblast  
Concrete Color = Beige  
Sealer = Acrylic Concrete Sealer

Water exits onto part facing down into small cave. Sand not able to travel to Valve system.

Mechanical Activator - no elect. needed. Same activator as used on outdoor showers. 8-10 seconds of water upon release of valve.

1/2" galvanized pipe

Water line attached to cast-in 1/2" galv. pipe. Pipe exits part horizontally at back of small cave. Plumbing may be attached after part is installed.

Mud Puddle is intended for drain away use. Recirculating system not included with part. Knowledge of local conditions necessary to design adequate drainage of water.

Part Name:	Ruby Falls	Height:	5'-11"	Age Group:	2-12
Part Number:	13002	Length:	9'-10"	Lifting:	2 x Straps
Weight:	10,500 lbs.	Width:	5'-8"	Revision:	2-2010

### Mud Puddle

Install with Straps (2) though sling slots at base. Install with Crane or other suitable equipment. 12" Sand - shown partially transparent for clarity. If Rubber surfacing used - recess footing to depth shown. Footing not required.

Plan View - Use Zone  
Scale: 1/8" = 1'-0"

Notes:  
Material = Polyfibreconcrete  
Finish/Texture = light sandblast  
Concrete Color = Beige  
Sealer = Acrylic Concrete Sealer

Water exits part facing down into small cave. Sand not able to travel to Valve system.

Mechanical Activator - no elect. needed. Same activator as used on outdoor showers. 8-10 seconds of water upon release of valve.

1/2" galvanized pipe

Water line attached to cast-in 1/2" galv. pipe. Pipe exits part horizontally at back of small cave. Plumbing may be attached after part is installed.

Mud Puddle is intended for drain away use. Recirculating system not included with part.

Part Name:	Mud Puddle	Height:	3'-9"	Age Group:	2-12
Part Number:	13001	Length:	9'-1"	Lifting:	2 x Straps
Weight:	5,500 lbs.	Width:	4'-11"	Revision:	2-2010



PRELIMINARY DESIGN REVIEW  
JULY 2, 2021

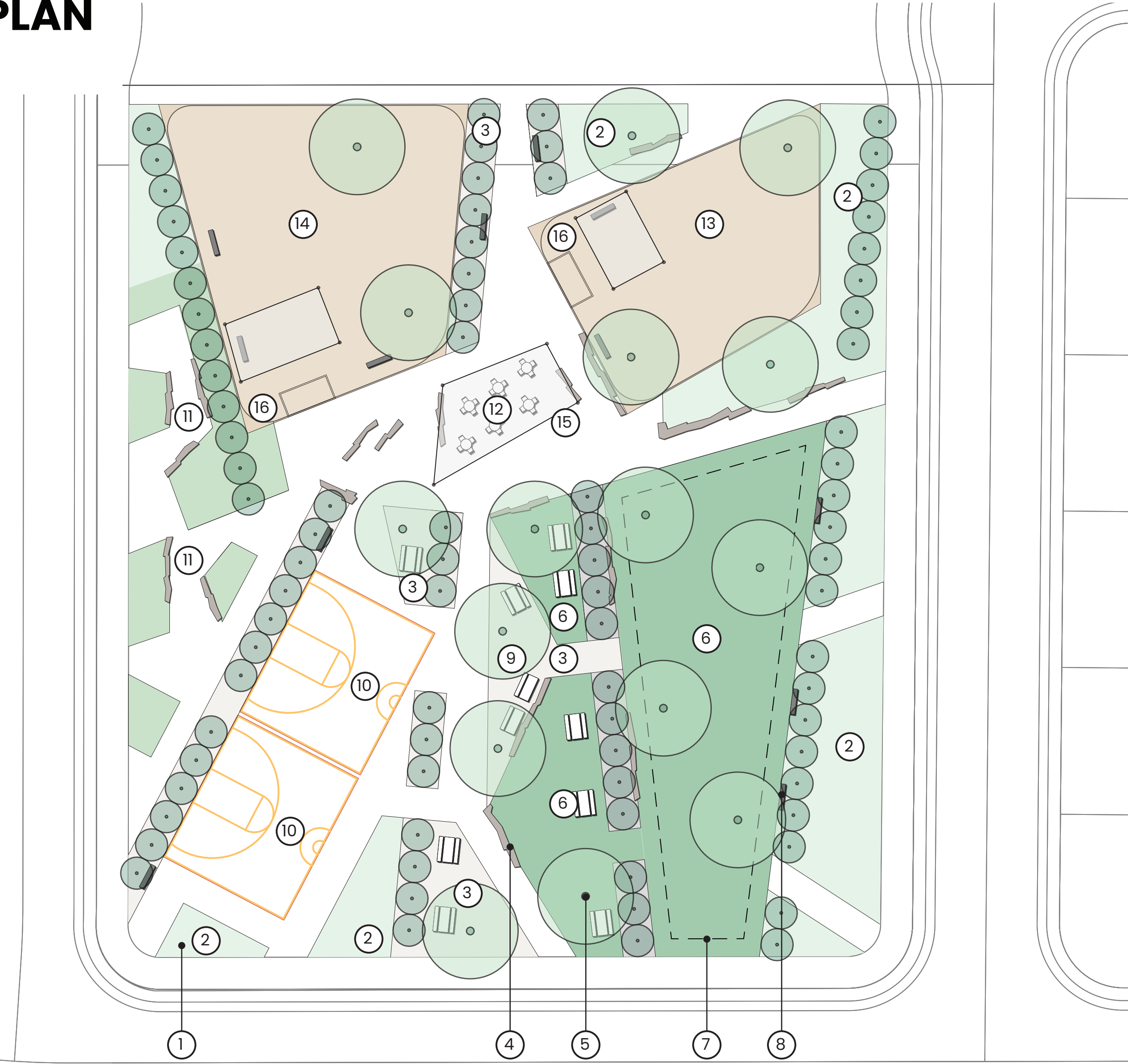
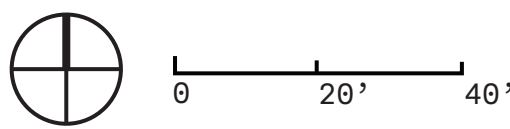
LARGE 'NATURAL'  
NEIGHBORHOOD PARK

L1.3



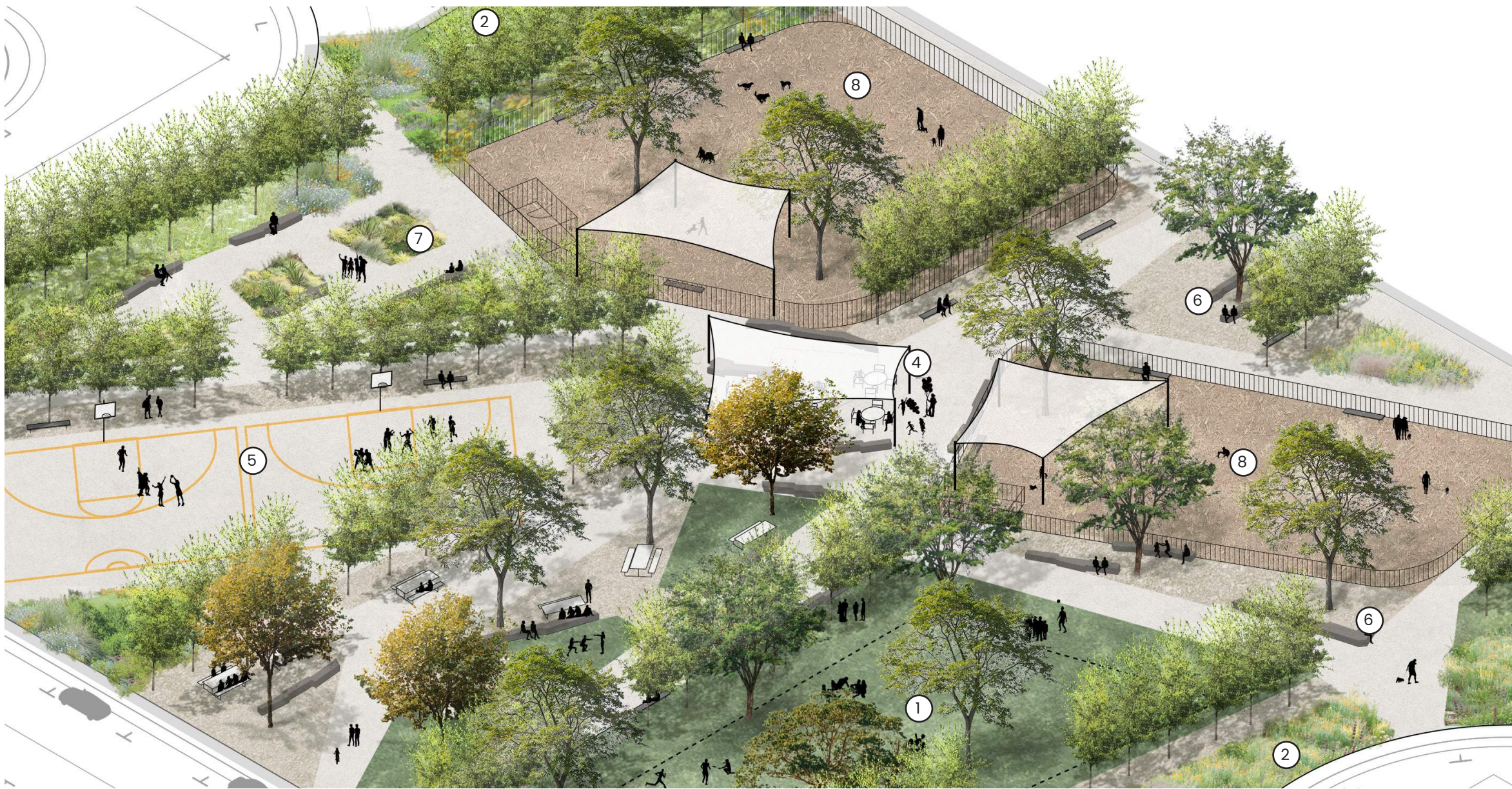
NEIGHBORHOOD PARK PLAN  
"URBAN" PARK

- KEYNOTES
- 1. FUTURE PARK SIGN LOCATION
  - 2. POLLINATOR PLANTS
  - 3. DECOMPOSED GRANITE PAVING
  - 4. ROCK OUTCROP SEAT WALLS
  - 5. LARGE OAK TREES
  - 6. TURF AREA
  - 7. PREFERRED BOUNDARY FOR UNDERGROUND VAULT
  - 8. PARK BENCH
  - 9. PICNIC & BBQ AREA
  - 10. BASKETBALL HALF COURT
  - 11. GARDEN AND SEATING AREA
  - 12. SHADED SEATING AREA
  - 13. SMALL DOG PARK (0.12 AC)
  - 14. LARGE DOG PARK (0.17 AC)
  - 15. DRINKING FOUNTAIN
  - 16. DRINKING FOUNTAIN WITH DOG BOWL



PARK PLAN

- KEYNOTES
- 1. POLLINATOR PLANTS
  - 2. TURF AREA
  - 3. PICNIC & BBQ AREA
  - 4. SHADED SEATING AREA
  - 5. BASKETBALL HALF COURT
  - 6. ROCK OUTCROP SEAT WALLS
  - 7. GARDEN AND SEATING AREA
  - 8. DOG PARK



CONCEPT AERIAL SKETCH

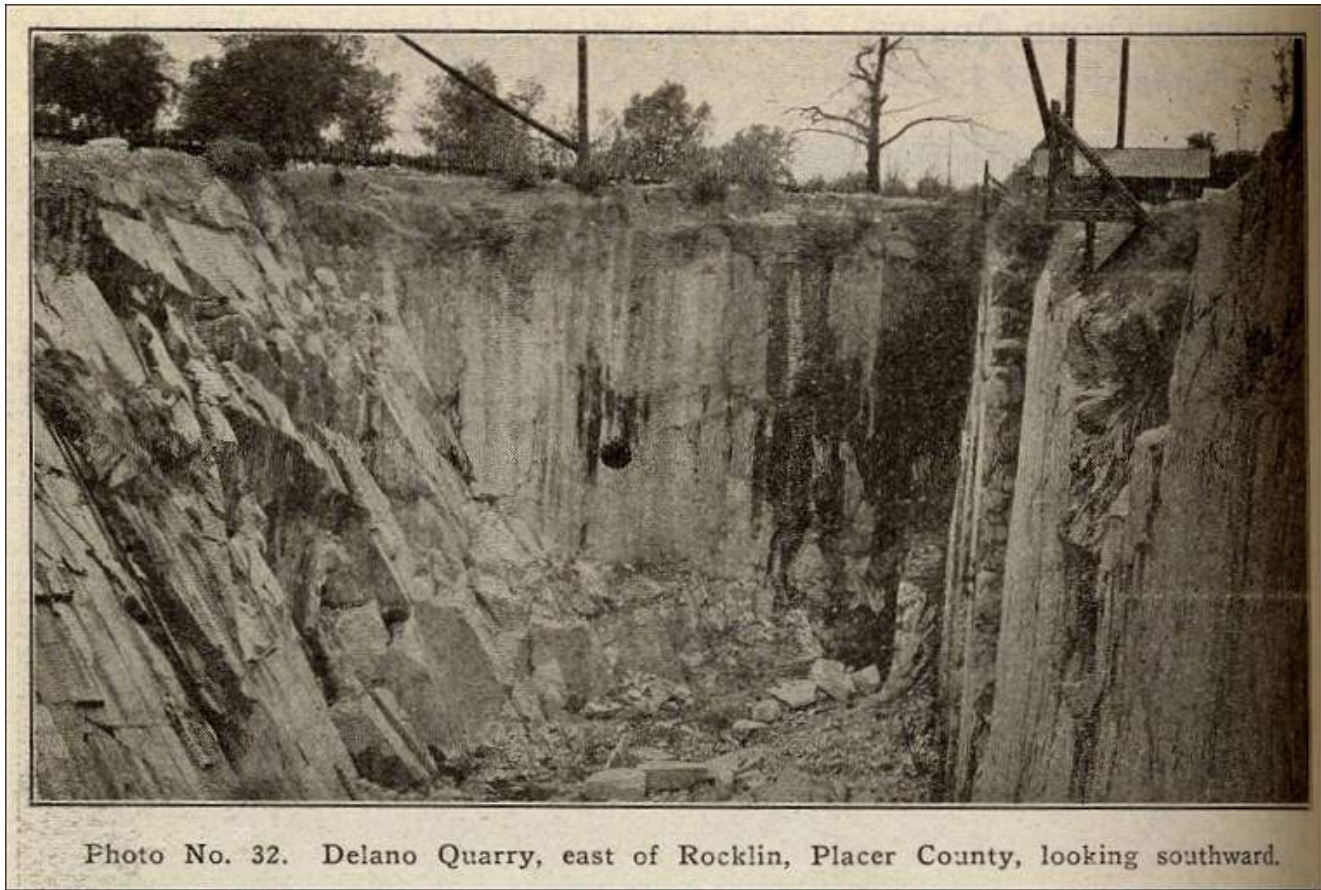
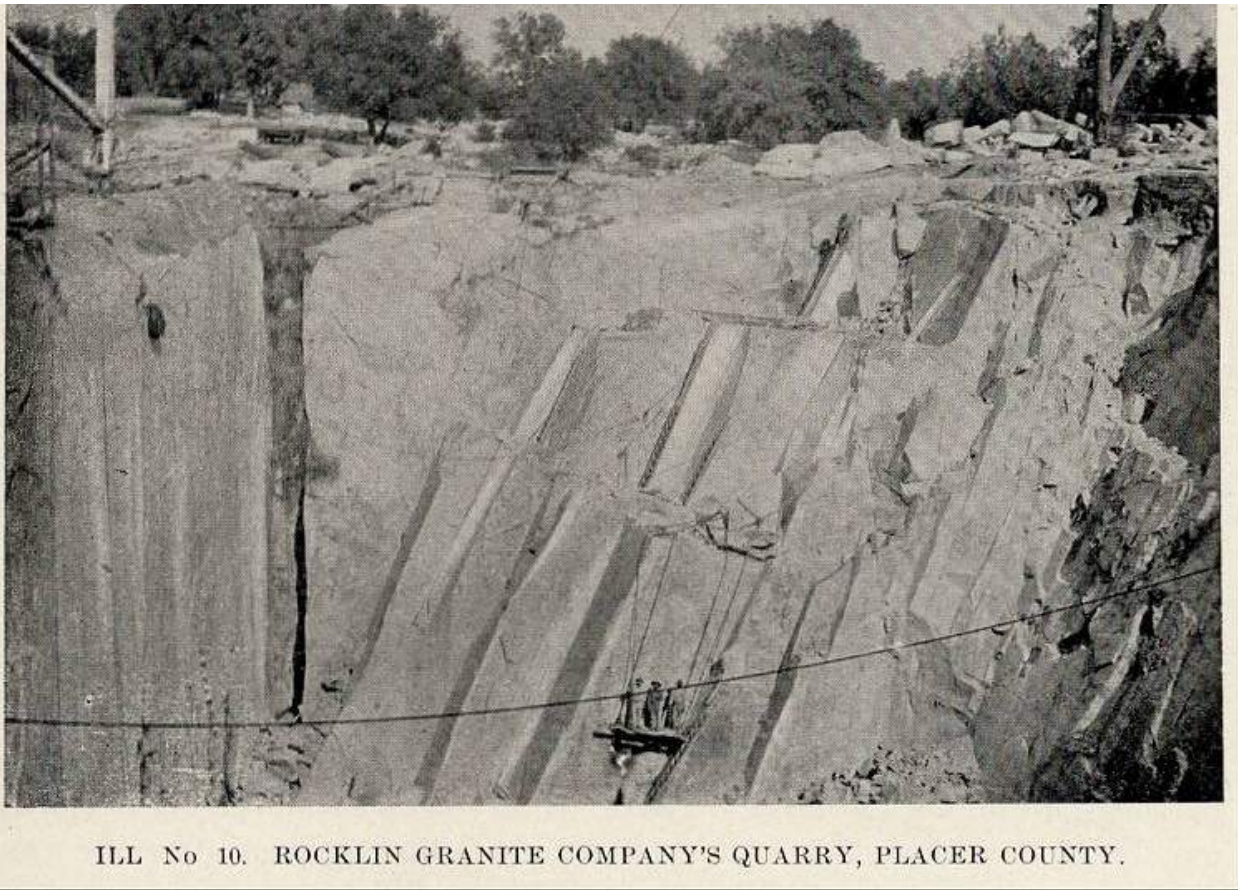


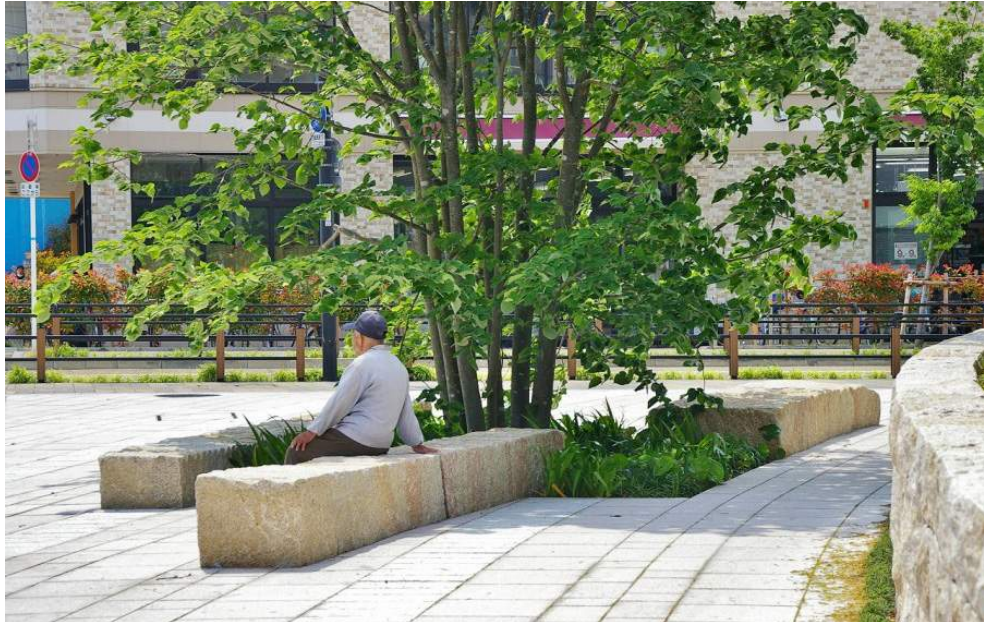
Photo No. 32. Delano Quarry, east of Rocklin, Placer County, looking southward.



ILL No 10. ROCKLIN GRANITE COMPANY'S QUARRY, PLACER COUNTY.



LOCAL HISTORIC QUARRY AND ORCHARD PRECEDENT IMAGES



PARK PRECEDENT IMAGES

